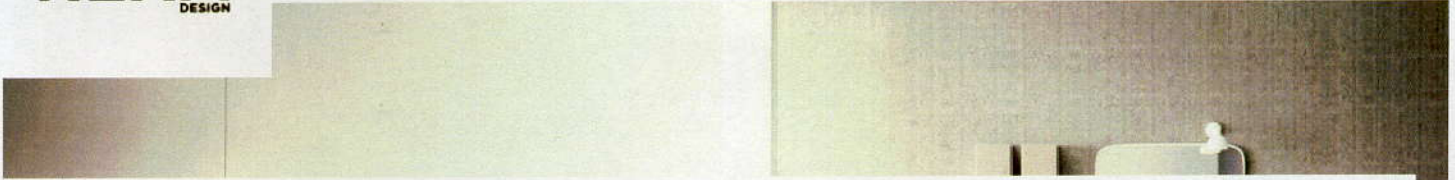
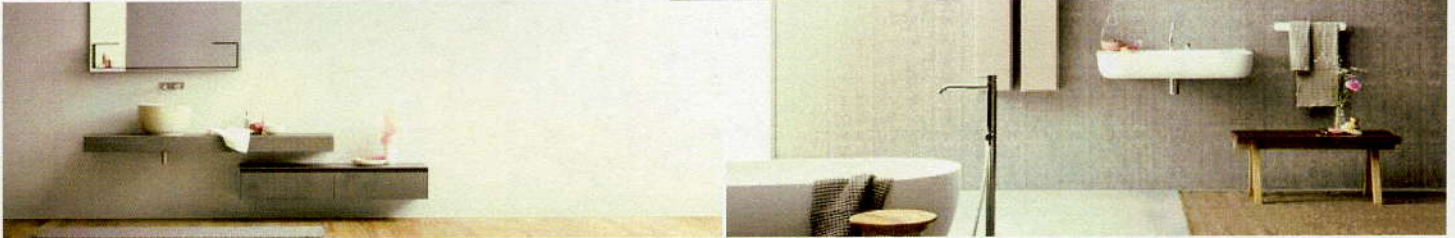


Rexa Design



[Projects](#) [Products](#) [Materials](#) [Collections](#) [Companies](#) [Events](#) [JOIN](#) [Sign In](#)



Rexa, which is based in the Friuli region, considers its design journey to be moving towards the excellence and perfection of an ambient dedicated to personal care. Completely Made in Italy, Rexa's products are realized using manual expertise combined with high technology numerically controlled machinery to create an end product of utmost quality. Combining new materials with rigorous, sartorial designs and excellent production processes that make it possible to personalize most of the products in the catalogue, the company has evolved to enable the production process to be almost entirely carried out inside the plant located in San Quirino (PN), a new site and production plant in (Pordenone) inaugurated in August 2012 that occupies a covered area of around 9,000 sq. meters: a green area surrounded by the stunning landscape of the Friuli mountains. A beautiful, well-designed ambient for creating positive sensations on all operational levels.


Like Tweet

23 Followers [View all](#) [FOLLOW](#)



[Contact Company](#)

Related Links & Articles

 [Rexa Design Website](#)

Products & Materials by Rexa Design [View all](#)



Posted on February 18 2015
REXA by Rexa Design



Posted on February 18 2015
REXA by Rexa Design



Posted on September 20 2013
REXA by Rexa Design

People Connected to Rexa Design [View all](#)

[About](#) [Blog](#) [Advertise](#) [Terms of Use](#) [Contact](#)

Connected on September 20 2013
REXA as Employee

[Recent activity](#) [View all](#)

Tags

[+ Add tags](#)

Company Passport

Social

Industry	Manufacturers
Specialties	Baths , Shower Trays , Wash Basins
Founded	2008
Employees	26-100
Website	Rexa Design
Address	Via Maniago, 57 33080, San Quirino Pordenone, Italy