



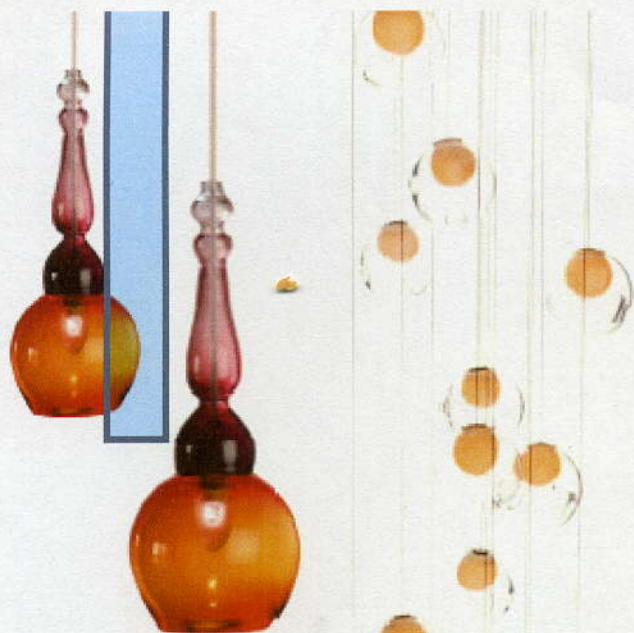
A wash WITH *light*

Use layers of light to create a mood-responsive bathroom that's both practical and indulgent

WORDS HARRIET DAICE

ALL AGLOW

The bar wall light in weathered brass, £479 by Davey Lighting, emits a lovely warm glow, making it the perfect accompaniment to a relaxing evening soak.

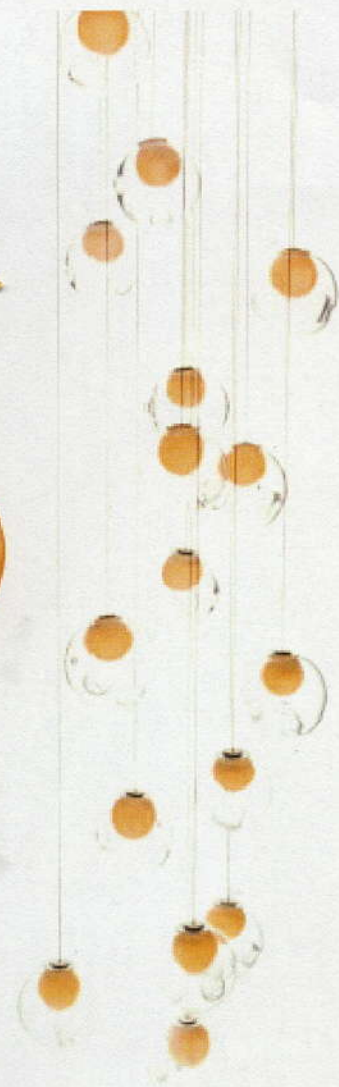


GORGEOUS GLASS

(Above) These stunning coloured glass pendants have a rating of IP44 and are free to blow to your specifications. Each light is held by a single rod which can be made to any length up to one metre and there are 21 colours, five shapes and four fitting finishes to choose from. From £540, Holloways of Ludlow

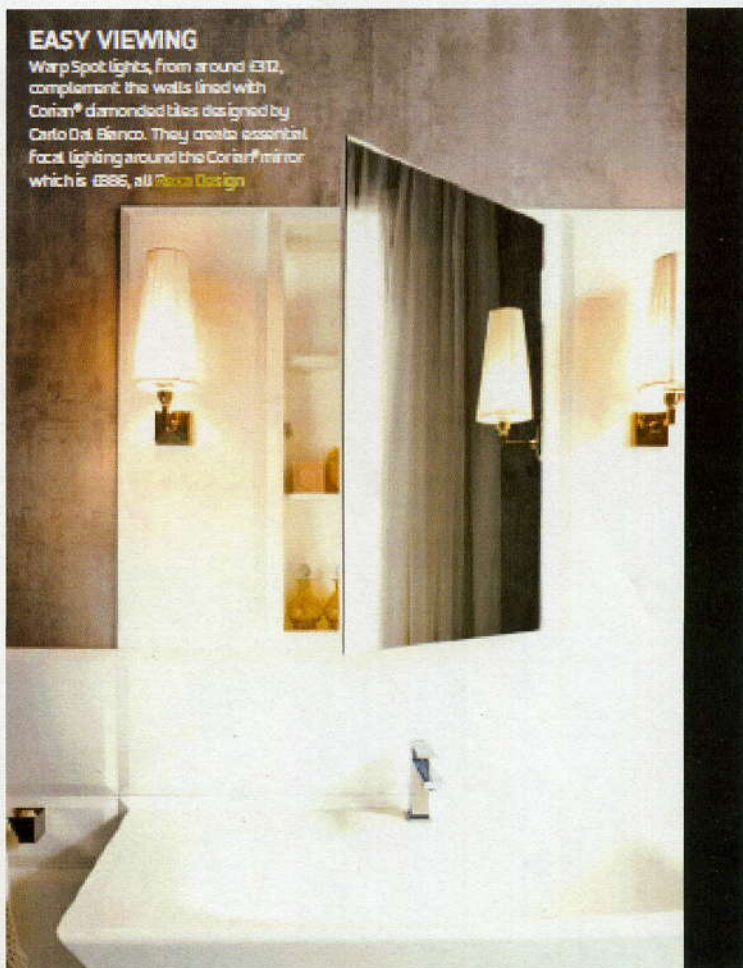
DROPS OF LIGHT

The Boori 34 series pendant is rated IP44 and has a hand blown glass sphere with a frosted cylindrical void that houses either a low voltage bulb or a replaceable LED. From £265 for a single pendant, Holloways of Ludlow



EASY VIEWING

Warp Spot lights, from around £172, complement the walls lined with Corian® diamonded tiles designed by Carlo Dal Bianco. They create essential focal lighting around the Corian® mirror which is £886, all *Deco Design*



From brisk morning showers to relaxed evening wind-down rituals, the modern bathroom goes through myriad moods and the lighting needs to alter accordingly. Just as in the kitchen and bedroom, this means taking a layered approach to combine ambient, task and accent lighting.

For general all-over ambient light, downlights are a popular choice, with those designed for use in the bathroom specially sealed to withstand condensation from bath and showers. Opting for tilting rather than fixed models will enable you to direct the light to where it is most needed in the room, or to draw attention to a special feature. However, flush or enclosed light fittings are not your only option for ceiling lights. There are also many pendant fittings, not traditionally associated with bathroom lighting, that are suitable for use in this room. A chandelier or other decorative fitting can be a wonderful way of injecting a decorative element and softening the clinical feel of modern sanitaryware.

When it comes to task lighting, the key area is around the mirror. Good lighting here will ensure that activities such as shaving or applying make-up can be done with accuracy and ease. Avoid placing downlights directly above the mirror as light coming down the face will cause shadows and distort features. According to Sally Storey,

Design Director of John Cullen Lighting, 'The most flattering way to light the face is when it is lit evenly from either side. There are many bathroom wall lights designed for this purpose to choose from or, for a clean, uncluttered look, choose an illuminated mirror, with panels of light integrated into either side.'

Accent lighting is your chance to be creative, and lift your whole bathroom from a utilitarian space to an indulgent personal sanctuary. Use downlights to highlight architectural features such as alcoves, set LEDs into the floor or along the base of the bath or create a floor wash for a wonderful soft, low-level light. Lights of this sort make ideal night lights and can come on automatically with the use of a PIR sensor (presence detector), removing the need for unsightly light pulls and ensuring you never waste energy by forgetting to turn the light off.

Putting your various light layers on different circuits will give you the greatest flexibility, allowing you to easily switch between various moods. Or install a pre-set lighting system to do this for you. If nothing else then ensure your lights are fitted with a dimmer switch, which is the simplest way of making your bathroom responsive to shifts in mood and purpose throughout the day. Just be sure to check their compatibility if you're using energy-saving bulbs. *PHOTO*